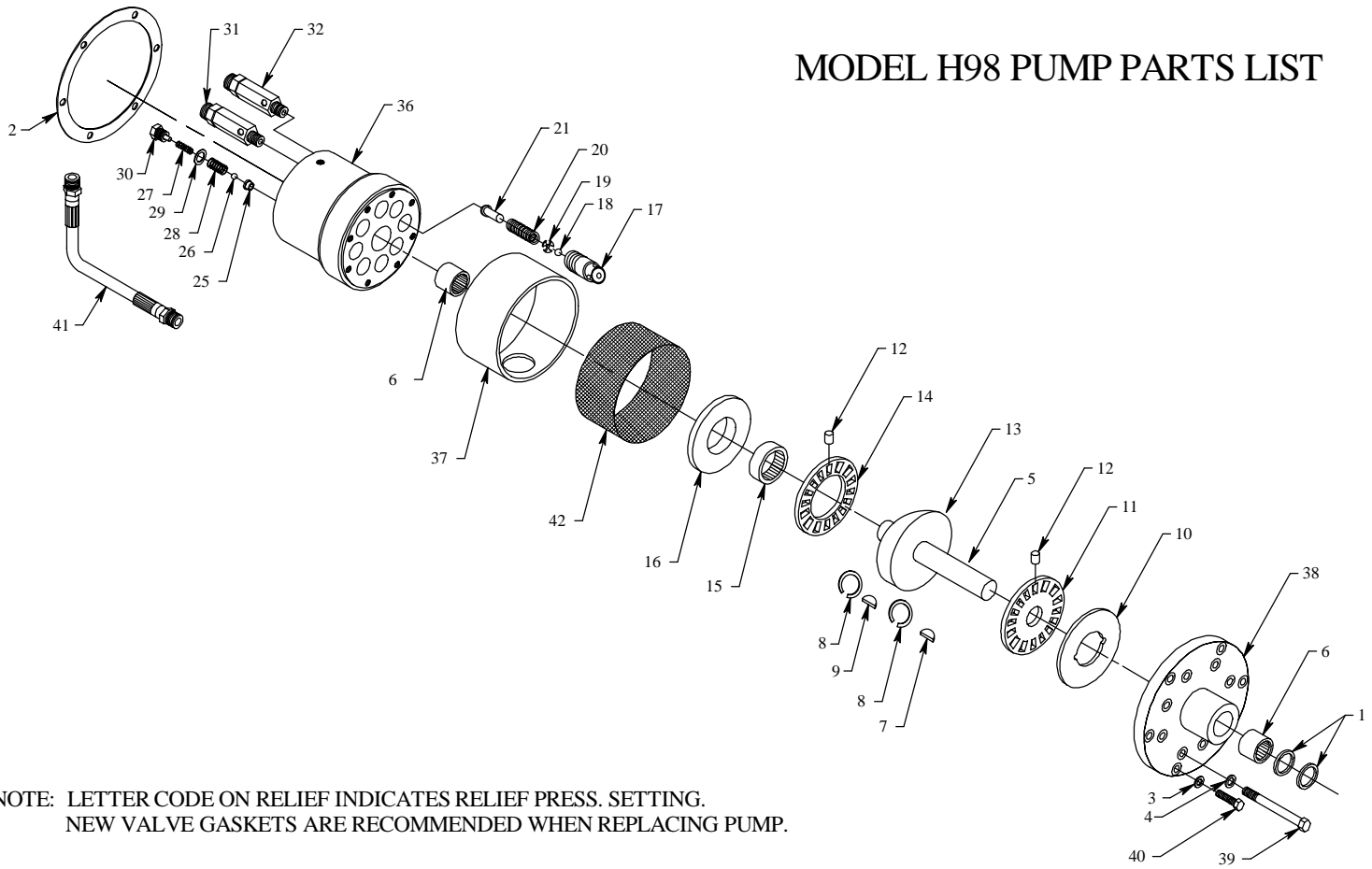


MODEL H98 PUMP PARTS LIST



NOTE: LETTER CODE ON RELIEF INDICATES RELIEF PRESS. SETTING.
NEW VALVE GASKETS ARE RECOMMENDED WHEN REPLACING PUMP.

NO.	PART NO.	QTY. REQ.	PART DESCRIPTION	NO.	PART NO.	QTY. REQ.	PART DESCRIPTION
	1359		SEAL KIT		2002		PISTON KIT
1	1028	2	OIL SEAL	17	1909	8	PISTON
2	1012	1	PUMP GASKET	18	1168	8	BALL
3	1030	6	ALUMINUM WASHER	19	1366	8	BALL STOP
4	1108	8	ALUMINUM WASHER	20	1368	8	SPRING
	1358		SHAFT AND BEARING KIT	21	1369	8	SPRING PIVOT
5	1075	1	SHAFT		1354		EXHAUST VALVE KIT
6	1023	2	NEEDLE BEARING	25	1043	8	SEAT
7	1027	1	SHAFT KEY	26	1015	8	BALL
8	1118	2	SNAP RING	27	2264	8	EXHAUST SPRING
9	1117	1	WOBBLE KEY	28	1041	8	CAGE SPRING
	1360		THRUST BEARING KIT	29	1009	8	WASHER
10	1080	1	THRUST RACE	30	1008	8	PORT STUD
11	1077	1	FRONT ROLLER RETAINER				REMAINING PUMP PARTS
12	1119	32	THRUST ROLLER BEARING	31,32	1087	2	DUAL RELIEF VALVE (SPECIFY PUMP MODEL, SERIAL#, PRESS. & R.P.M.)
13	1131	1	WOBBLE PLATE	36	1908	1	PUMP CASTING (Not Sold Separately)
14	1078	1	REAR ROLLER RETAINER	37	1237	1	INTAKE HOUSING TUBE
15	1106	1	THRUST PLATE BEARING	38	1350	1	FRONT CASTING
16	1076	1	PISTON THRUST PLATE	39	1107	8	PUMP ASSEMBLY BOLT
				40	1035	6	MOUNTING CAP SCREW
				41	--		HOSE - SPECIFY RESERVOIR SIZE WHEN ORDERING
				42	1515	1	PUMP INTAKE SCREEN